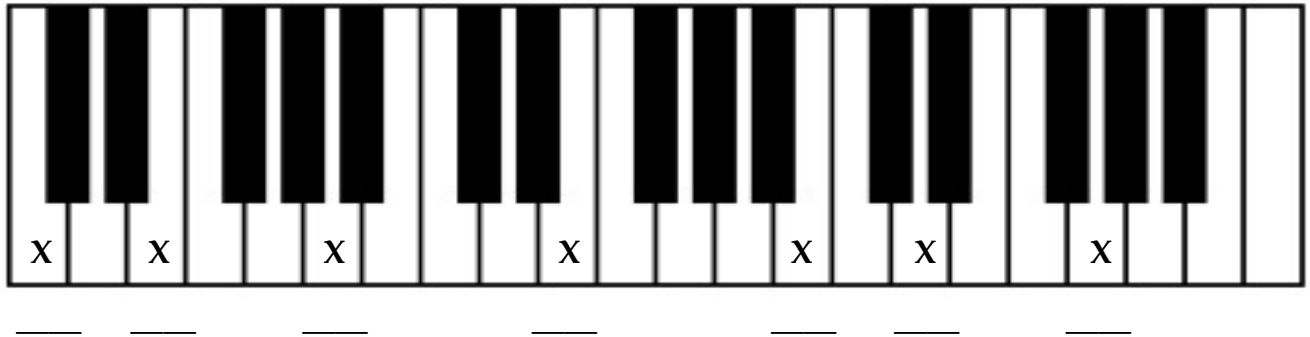


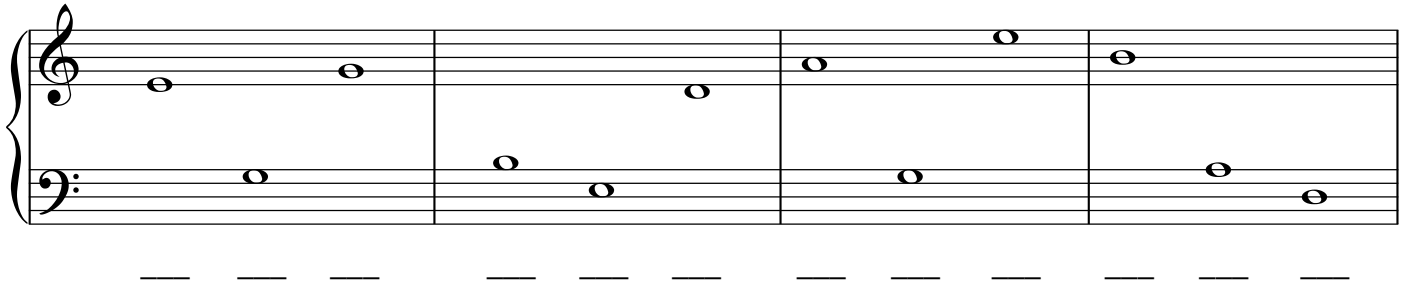
Dorothy Sutton Performance Festival Primer Level Theory Exam - Piano - PRACTICE

Student's Name _____ Teacher Name _____

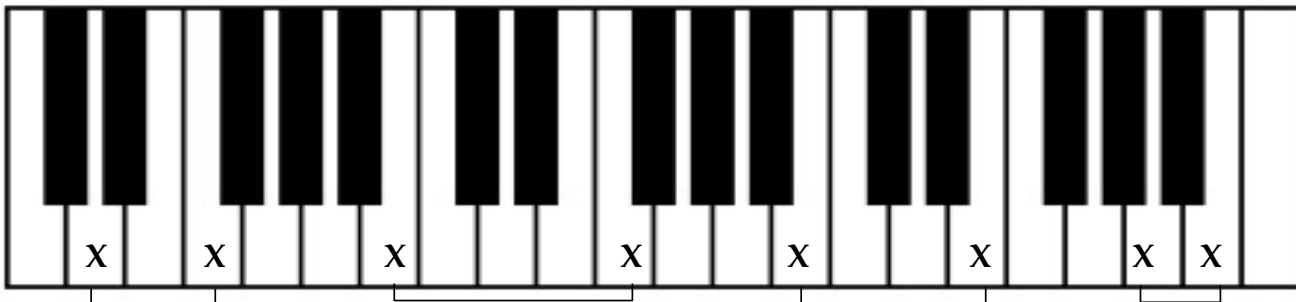
1. Write the *letter name* of each key marked with an X on the blank below it.



2. Write the pitch *letter name* under each note. Each measure will spell a word.



3. Name each *interval* marked by the Xs and brackets below. Use the numbers *2nd, 3rd, 4th, 5th*.



4. Draw one note that completes each addition problem.







example: $\text{quarter note} + \text{quarter note} = \text{half note}$ $\text{quarter note} + \text{quarter note} = \underline{\hspace{1cm}}$

$\text{quarter note} + \text{quarter note} = \underline{\hspace{1cm}}$ $\text{quarter note} + \text{quarter note} + \text{quarter note} = \underline{\hspace{1cm}}$

5. Name each interval below as a *2nd, 3rd, 4th or 5th*.

example: 3rd _____

6. Matching: Write the *correct letter* from the first column in front the answers in the second column.

- A. piano (*p*) ___ staccato
- B.  ___ legato
- C.  ___ three quarter notes per measure
- D.  ___ double bar line
- E.  ___ tied notes
- F. 2nd, 3rd, 4th, 5th ___ loud
- G.  ___ soft
- H. $\frac{3}{4}$ ___ bass clef
- I. forte (*f*) ___ treble clef
- J.  ___ intervals

7. Add *barlines* to the music below so that each measure has the correct numbers of beats.

8. Each line has *one COMPLETE measure and three INCOMPLETE measures*.
Circle the complete measure and then add one note to complete the incomplete measures.

example: 